

# CATCH US ON THE WATER!



WATER ITEM	1-3 DAY(S)	ADDITIONAL DAY
Single Adult Kayak	\$25	\$5
Single Youth Kayak (up to 130 lbs)	\$15	\$5
Tandem Kayak	\$25	\$5
Canoe	\$15	\$5
Inflatable Stand Up Paddle Board - SUP (pump included)	\$35	\$15
Additional Life Jacket	\$5	\$2
Bass Boat	\$200	\$75
John Boat	\$75	\$20



→ All kayak and SUP rentals include life jacket and paddle.

→ ODR does not provide tie down straps and/or vehicle racks.



## Policies

01. Payment must be made in full at time of reservation.
02. Cancellations must be made 14 days prior in order to receive full refund.
03. Pickup for reservable rental items is after 1pm.
04. Early pickup for a reservable rental item can be arranged for a fee of \$25, if available.
05. All towables must be picked up 30 minutes prior to closing.
06. Vehicles must have proper wiring for equipment rented. Refunds will not be issued for improper or non-functional wiring on the tow vehicle at time of pickup.



Follow us on Social Media!

# ODR RENTALS

Let us help you explore all Idaho has to offer!



Questions? Get ahold of us!



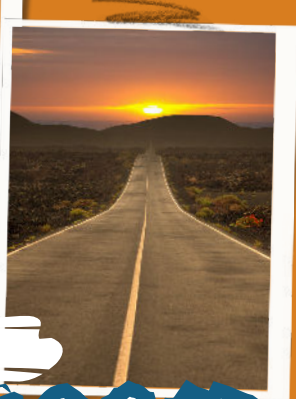
- (208)828-6297
- 655 Pine Street, Bldg 2800 Mountain Home AFB, ID 83648
- mountainhomefss/outdoor-adventure/
- OutdoorRecreation366FSS



# LET'S GET OUT OF TOWN!



CAMPING ITEM	1-3 DAY(S)	ADDITIONAL DAY
Meat Grinder	\$45	\$15
Sleeping Bag	\$10	\$4
Mummy Bag	\$15	\$5
Sleeping Pad	\$5	\$2
Heater	\$10	\$4
Stove	\$10	\$4
Generator (2000 w.)	\$50	\$20
Generator (3000 w.)	\$75	\$30
Generator (5500 w.)	\$60	\$25
Generator (7000 w.)	\$75	\$30
Lanterns (batteries not included)	\$5	\$2
Ice Chest Small (32 qt.)	\$10	\$3
Ice Chest Medium (50 qt.)	\$12	\$4
Ice Chest Large (100 qt.)	\$15	\$5
Water Jug Small (2 gal.)	\$5	\$2
Water Jug Medium (5 gal.)	\$10	\$3
Water Jug Large (10 gal.)	\$12	\$4
Backpack (75 L)	\$10	\$4
Hiking Poles	\$10	\$4
Jet Boil	\$10	\$4
Camp Cot	\$10	\$4
Cot Pad	\$5	\$2
Tent (2 person)	\$15	\$5
Tent (4 person)	\$20	\$7
Tent (6 person)	\$25	\$10



It's time to  
**HIT THE ROAD**

## TRAILER 1-3 DAY(S)

**Small (4x8)** \$25  
2 1/4 Pin Flat Additional Day: \$10

**Single Axle Enclosed (6x10)** \$50  
2 1/4 Pin Flat Additional Day: \$20

**Single Axle Enclosed (6x12)** \$60  
2 1/4 Pin Flat Additional Day: \$20

**Double Axle Utility (6x12)** \$50  
2-5/16"/7 Pin & Trailer Brakes Additional Day: \$15

**Double Axle Enclosed (7x16)** \$75  
2-5/16"/7 Pin & Trailer Brakes Additional Day: \$30

**2 Place ATV/Utility Trailer (5x12)** \$50  
2 1/4 Pin & No Trailer Brakes Needed Additional Day: \$20

**Shamrock 19** \$200  
2 5/16"/7 Pin Connector & Trailer Brakes Additional Day: \$75

**Hummingbird 10RK** \$130  
2"/7 Pin Connector & Trailer Brakes Additional Day: \$45

**R-Pod 176** \$180  
2"/7 Pin Connector & Trailer Brakes Additional Day: \$60

**Jumping Jack Pull Behind** \$85  
2 1/4 Pin Flat Additional Day: \$35



## CAMPING PACKAGE

**\$35** 2 person tent 4 person tent **\$40**  
2 sleeping bags 4 sleeping bags  
2 sleeping pads 4 sleeping pads

6 person tent **\$45**  
6 sleeping bags  
6 sleeping pads

**Choose 2 accessories to go with it all!**

- Camp stove • Ice chest • Heater
- Lantern • Jet boil • Backpack

Please ask ODR staff about hitch and electrical connections. Hitch ball stingers and wiring adapters are available for an additional charge.

**⚠ Campers with a 7 pin connector REQUIRE trailer brakes!**